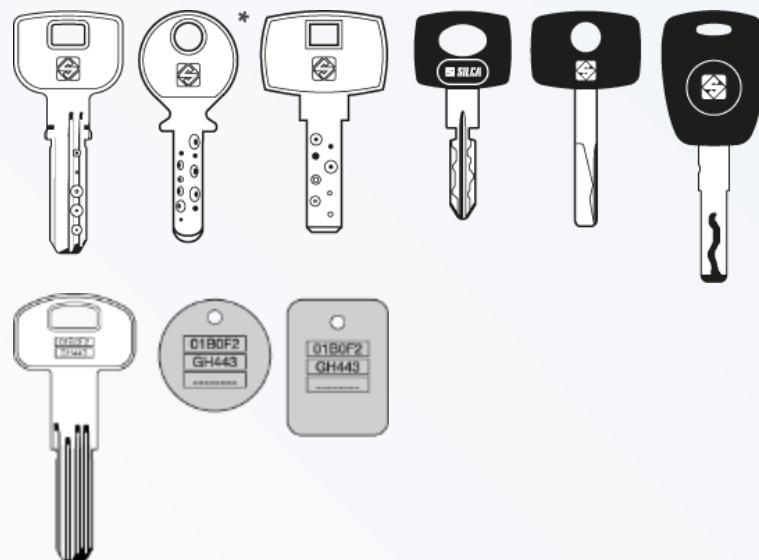




TRIAX PRO



Triax Pro is the top electronic key machine for decoding and cutting either by code or from original **laser and dimple keys**. It also **engraves keys, keyrings and small medals**.



* Keys with angled cuts (cut only with R13 or R4 optional clamp).

TRIAX PRO



The professional key machine

- Designed for experienced locksmiths and professional key cutters, Triax Pro combines **reliable performance, effortless use and is made exclusively from select components.**
- The machine can work both in **stand-alone mode or with a PC connection** that enables you to access the largest key database available on the market via user-friendly software.

TRIAX PRO



Main features

- Faster cutting cycle.
- Interchangeable jaws.
- Quick-release tool change.
- Resistant hardware and finishing.
- User-friendly software.
- Maintenance menu.
- Clamp calibration notice.

CE Triax Pro has been designed and manufactured in conformity with CE mark European standards.

TRIAX PRO



Faster cutting cycle

- Triax Pro is equipped with a **spindle able to reach speeds of up to 19000 rpm.**
 - **The faster carriage movements** reduce cycle time by:
 - 30-40% for decoding laser keys
 - 15-20% for cutting laser keys
 - 10-15% for decoding dimple keys
 - 25-30% for cutting dimple keys
- compared with the Triax Quattro*.

* Tests have been performed using Silca branded keys with 5 pins.

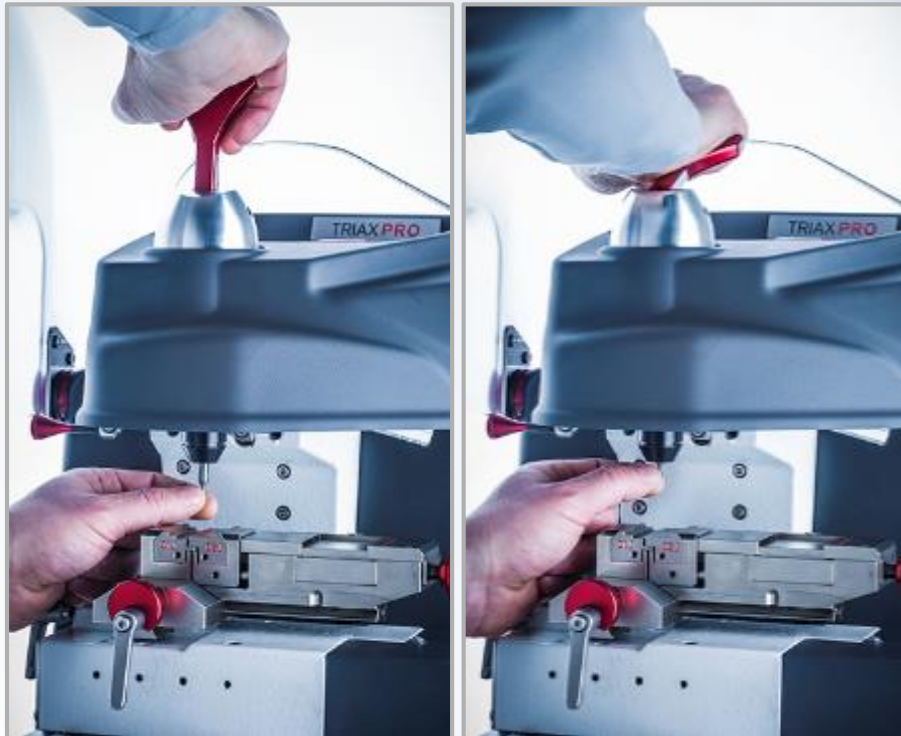
TRIAX PRO



Cost-saving and flexible jaw system

- The clamp features the **easy-change jaws like Futura**, ensuring faster installation and lower costs.
- This space-saving, dove tailed solution is compatible with all existing Triax clamps and, because the jaws are the same, fully interchangeable with Futura.
- The new **nickel plated clamps** are rustproof and less prone to wear.

TRIAX PRO



Optimized tool change and hardware

- The new **quick-release tool change system** is fast, smooth and easy to use: it is activated by means of a simple lever with an ergonomic handle.
- **All exposed screws are made of stainless steel** for better resistance and a longer life.

TRIAX PRO



Tools and accessories close to hand

- The **cutter holder** fits 14 tools and is incorporated in the machine for comfortable access.
- On top of the machine there is a **utensil tray with non-slip mat** to help you keep your work bench neat and tidy.

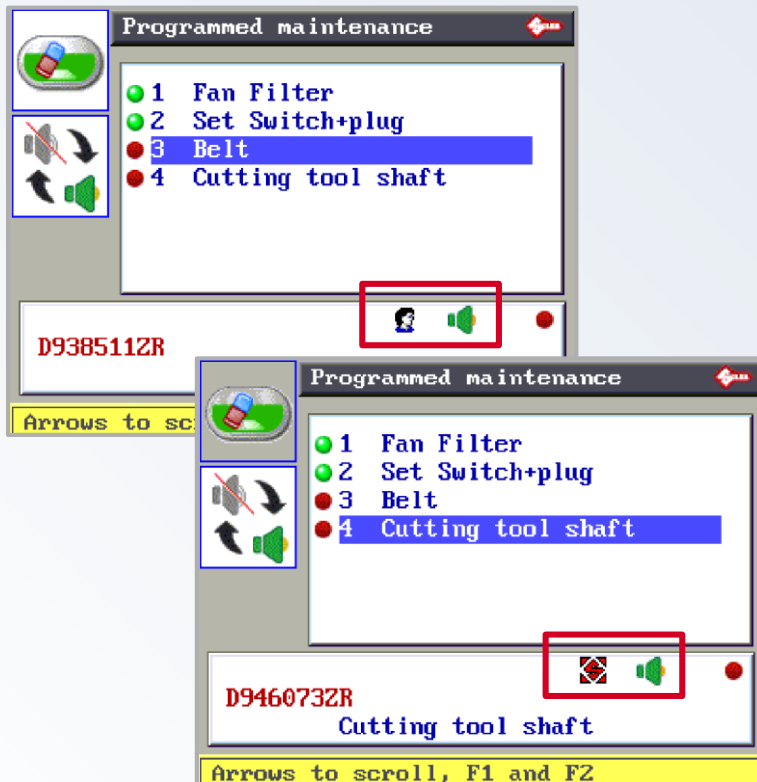
TRIAx PRO



User-friendly software

- The software controlling the machine allows you to perform **searches by key blank, serial number, lock manufacturer, indirect code, system description.**
- A number of useful functions have been added to **improve maintenance** so optimizing the use of the machine over time.
- The **pen drive** provided with the machine allows you to update the software in just 5 minutes, to create backups of all the data saved on the machine, to store data card codes securely and to optimize the use of the stand-alone mode.
- The machine is equipped with a **5.7” coloured display.**

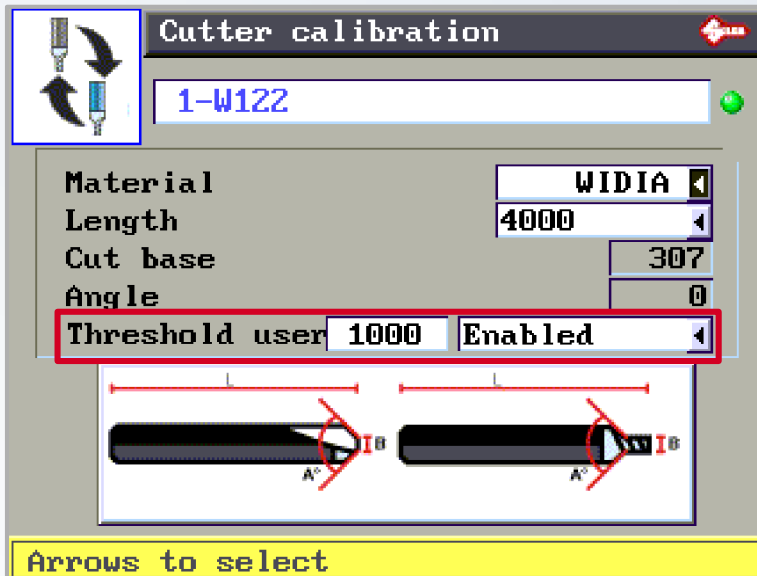
TRIAx PRO



Software management of maintenance (Activated by the installer)

- The **new maintenance menu**, programmed by the installer, advises on **maintenance necessary for parts subject to mechanical wear**.
- Depending on the setting, the software advises whether the intervention can be **performed by the user** (e.g. changing the belt) **or by the installer** (e.g. changing the cutter shaft).
- Activated parameters are marked by a green light, whilst components that need **maintenance or replacement are signalled by a red light**.

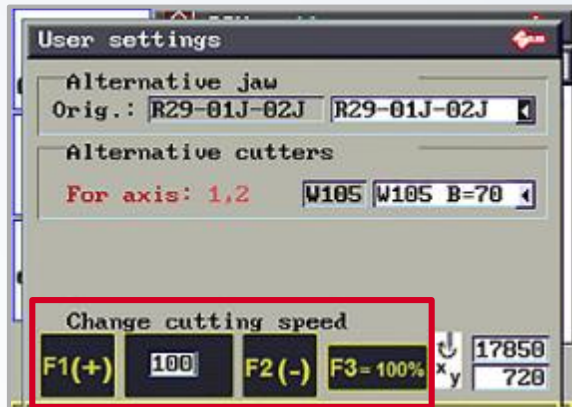
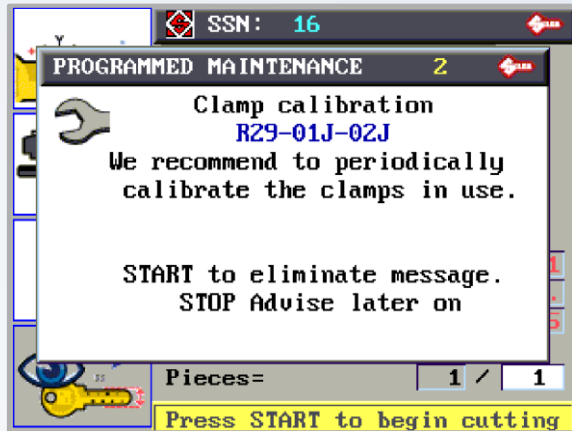
TRIAx PRO



Cut keys counter (Activated by the user)

- The machine keeps a **running total of keys cut with each individual cutter**, saving the need to manually make a note at each operation.
- The software advises the operator on cutter use and **suggests when the cutter needs replacement**.
- The notice is activated when a pre-set level of keys cut is reached. The level is adjusted by the users according to their use of the machine.

TRIAX PRO



Clamp calibration notice (Activated by the installer)

- To maintain the highest cutting standards, when a predetermined number of keys have been cut the software advises that the **clamp and tracer tower should be re-calibrated.**

Adjustable cutting speed

- Once you have selected the cutting card to use, **you can modify the cutting speed by 30%.**
- In this way, you can speed up work queues or slow down to limit cutter wear.

TRIAX PRO



The professional key machine at an affordable price: UTP version




- **Significantly reduce the start-up cost** of the machine.
- **Distribute your investment** over time.
- The **latest software updates** can always be downloaded **free** of extra charge via SKP.
- **Free to move to full mode at any time:** you will be able to request at any time a code for unlocking the machine and opt out of the UTP Solution.

TRIAX PRO




Unlimited Token Plan

- **UTP (Unlimited Token Plan)** is a special timed digital token that allows you to use the machine freely (**an unlimited number of keys can be cut**) for a given period (**up to 31 December of the current calendar year**).
- The colour of the icon changes as follows:

-  Days of use exceed the minimum threshold set in the Options -> UTP menu
-  Days of use are below the minimum threshold set in the Options -> UTP menu
-  Days of use have expired or are about to expire


TRIAX PRO



UTP TOKEN Info 

UTP deadline notice (days)

Date deadline 31/12/2016



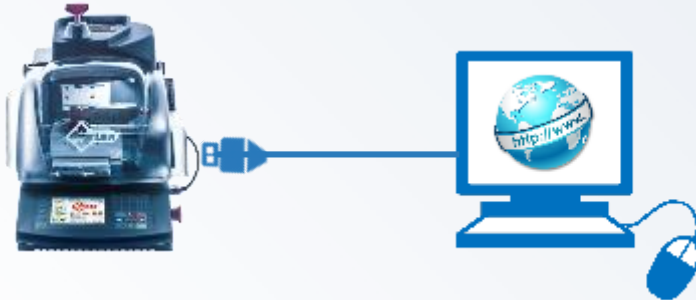
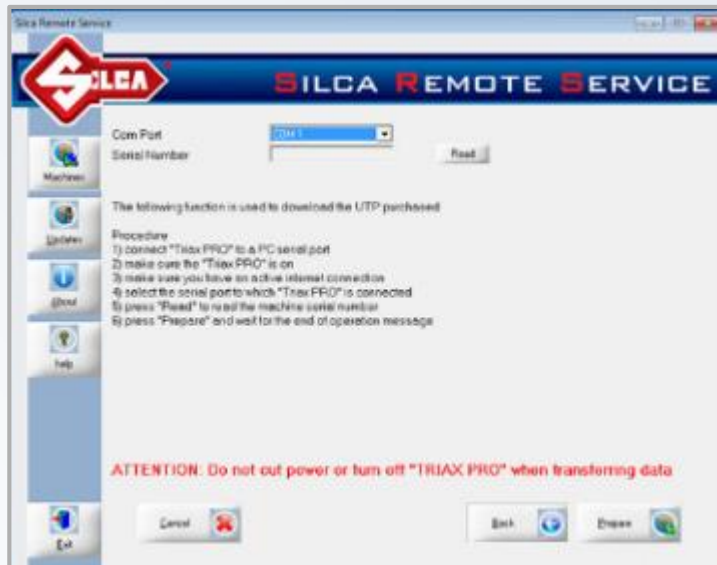
19/02/2016	10:12:26	ADD	2016
------------	----------	-----	------

Arrows to scroll, F2 to exit

Free one-month UTP

- On cutting the first key a free one-month UTP is automatically activated.
- At the end of this period the customer has other 30 days to purchase a UTP package.
- After that (1 month free + 30 days) the machine can no longer be used to cut keys (it can be used only for decoding and engraving).
- **ATTENTION:** the UTP package purchased expires at the end of the calendar year (31 December).

TRIAX PRO



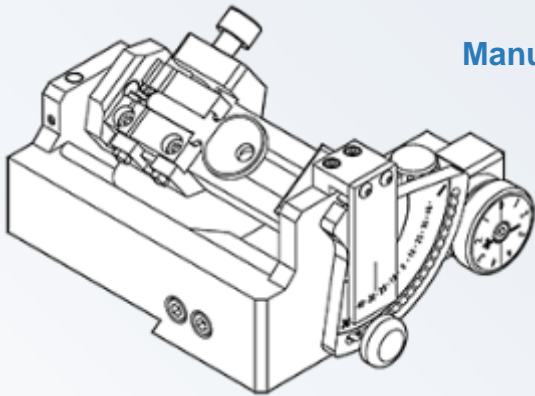
Extra Token

- **When you have finished your UTP, you have 30 extra days to purchase a UTP package (Extra Token).** At the end of these 30 days the machine can no longer be used to cut keys (it can be used only for decoding and engraving).
- **After purchasing a new UTP package you can download it from the Internet by means of the Silca Remote Service program (SRS) - the machine must be connected to the PC while downloading the UTP.**

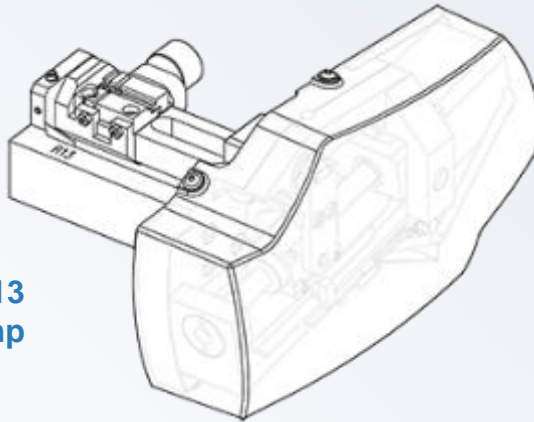
TRIAX PRO



Manual R4 clamp



Motorized R13 clamp



Optional tools and accessories

Two optional **tilting clamps for angled cuts** ($\pm 45^\circ$) ensure top quality performances with high speed cutting cycles:

- the motorized R13 clamp,
- the manual R4 clamp.

Further optional accessories available. For more details, visit our website.

TRIAX PRO



Technical Data

Power supply	230V - 50Hz, 100V -50/60Hz
Motor	Brushless 48V - 200 W
Standard cutters	W500 in carbide - W101 in carbide - W146 in carbide (for engraving)
Cutter speed	6000 – 19000 rpm
Tracer point	U103
Tracer tower tool	04TT
Movements	on 3 axes with ball screws activated by step motors, on rectified roller guides. Possibility to add a 4th axis with the manual or motorized optional clamps.
Carriages runs	axis X: 57 mm, axis Y: 32 mm, axis Z: 30 mm
Clamps	R29 + R28 removable R29: with 01J and 02J jaws for cutting laser and dimple keys R28: for engraving
Dimensions	width: 450 mm, depth: 600 mm height: 510 mm (with raised shield: 680 mm)
Weight	51,5 Kg

TRIAX PRO



www.silca.biz

© Copyright by Silca S.p.A. 2016 All Rights Reserved

In compliance with current regulations relating to industrial property, we hereby state that the trade-marks or trade names mentioned in this document are the exclusive property of authorized manufacturers of locks and users. Said trade-marks or trade names are nominated only for the purposes of information so that any lock for which our keys are made can be rapidly identified. This document is reserved exclusively for professional key cutters who use Silca products. / All information and illustrations in this document are for guidance only. Silca reserves the right to alter products designs, dimensions or info to improve the products quality. The contents of this document are fully protected by Copyright and may not be copied or reproduced in any form, without written permission from Silca S.p.A. Any controversy shall be settled by the Courts of Justice where the company has its headquarters, with express exclusion of any other court.